

SBF Series Shoebox Flood

FLOOD / SIGNAGE LIGHTING

100-277V

**LM79
LM80**

IP65



PROJECT INFORMATION

Project Name _____

Catalog No. _____ Date _____

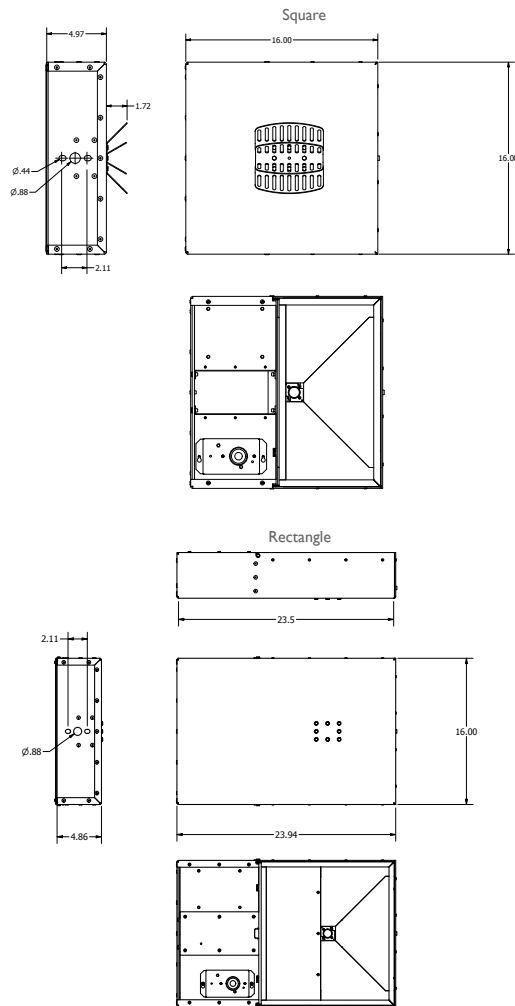
DESCRIPTION

The ActiveLED® SBF Series Shoebox Flood is engineered as an energy efficient replacement for high wattage Metal Halide and High Pressure Sodium light fixtures. The design boasts our LUM-INTENSE™ LED Lighting Technology and a total fixture light output of 12,240 Lumens.

Applications include: Tennis Courts, Building and Property Perimeters, Overpasses.



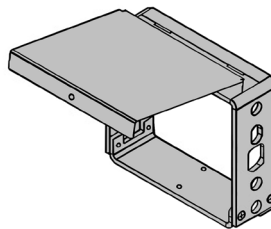
DIMENSIONS



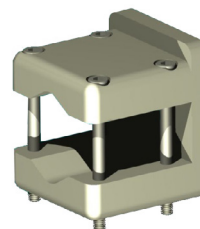
FEATURES

- ThermalDRAW™ Cooling Technology - Patented cooling technology ensures LED components will equal or exceed warranty.
- LUM-INTENSE™ - LED lighting luminaire technology that combines recent advancements in LED Modules, Drivers and Optics to deliver more Lumens per Watt in a smaller package.
- Warranty - 10 Year Warranty on LED elements, fixture housing, and LED Driver.

MOUNTING OPTIONS



Square Pole Mount
Part # 00-27-0002-0015



Round Arm Mount
Part # 00-27-0002-0003B



LIGHT OUTPUT
12,240 lm

WATTS
80W

LUMENS per WATT
153 lm/W

LIGHT COLOR (CCT)
3000 K

ActiveLED®
Energy Efficient Lighting and Controls

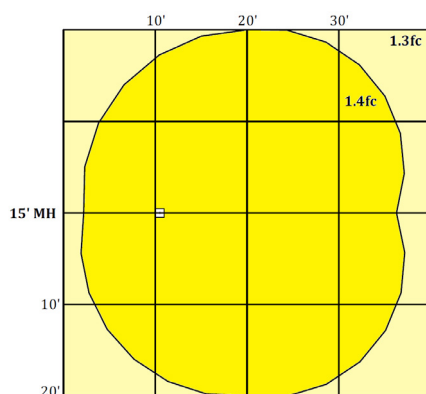
NOTE: Lighting Facts shown for SBF, 80W only.
For more Lighting Facts, visit lightingfacts.com for the Label and Label Reference Guide.



SBF Series Shoebox Flood

FLOOD / SIGNAGE LIGHTING

PHOTOMETRICS



PERFORMANCE DATA

AMBIENT TEMPERATURES	0 HOURS	45,000 HOURS	90,000 HOURS
77°F (25°C)	1.00	0.99	0.99
104°F (40°C)	1.00	0.98	0.96
131°F (55°C)	1.00	0.96	0.92
140°F (60°C)	1.00	0.95	0.90

Projected Lumen Maintenance (TM-21)

NOTE: Calculated using data collected according to LM-80 lumen maintenance on the LED package.

GENERAL SPECIFICATIONS

Input Voltage	Auto-sensing, 100-277 Volts AC, 50/60 Hz	LED Optics	IP65 rated, thermally bonded LEDs, borosilicate glass lens w/silicone sealing. Patented thermal management mounting system
Input Power	80 LED Watt 83 Input Watts	CCT	2700K, 3000K, 3500K, 4000K, or 5000K
Power Factor	> 0.90 (at ~100-277 Volts)	Housing	Aluminum for enclosure and heat sinking parts, stainless steel hardware
THD	Total Harmonic Distortion (THD) <20% (typical 9.9%)	Finish	Powder coated after fabrication
Driver	Integrated driver with integral heat sink	Dimensions	Square: 16 x 16 x 4.97, Rectangle: 16 x 23.94 x 4.86
Operating Temperature	-58° F to 149° F (-50° C to 65° C)	Weight	30 pounds
Lumen Lifetime	L90/90K Hrs @ 60° C (90,000 Hrs with 90% Luminous Flux)		

WARRANTY

Ten (10) Year Warranty - LEDs, Fixture, and Driver shall conform to its published specifications under normal usage and operating conditions including "no light loss" of more than 10% at the end of the period. LEDs will produce at least 90% of their initial light output with no color shift after 90,000 hours of operation.

LISTINGS AND TESTS

UL listed driver; CE, suitable for exterior locations. RoHS compliant. IP65 Rated optical assembly. LM-79 and LM-80 info available. Conforms to FCC Part 15.19 Subpart B Class A. Made in USA - ARRA Compliant.

ORDERING INFORMATION

Example: SBFSU-SP-F53080BZ-J

SBF				F			80		
------------	--	--	--	----------	--	--	-----------	--	--

Style	Dimension	Voltage	Mount	Diffuser	Pattern	CCT	Watts	Color	Options
SBF	S	U	SP	F	3	50	80	SL	D
SBF Series Shoebox Flood	Square 16x16	100-277 VAC, 50/60 Hz.	Square Pole Mount	Clear Low Fe Glass (Over the LED only)	Type 3 Wide	5,000K	80W LED, 83W Max	Silver	Dusk to Dawn
	R	H	4K		5	40		BK	M
	Rectangle 16x23	300-480 VAC, 50/60 Hz.	Knuckle Tenon End		Type 5 Symmetrical	4,000K		Black	Motion
		N	RM			35		BR	J
		No Power Supply	Round Arm Mount			3,500K		Brown	Both Dusk to Dawn and Motion
						30		BZ	
						3,000K		Bronze	
						27		CG	
						2,700K		Charcoal	
								WH	
								White	
								X	
								Custom	